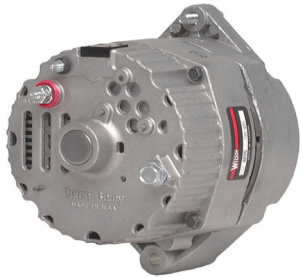


TESTED POWER. TRUSTED PERFORMANCE.

COMMERCIAL VEHICLE *Industrial*



AUGUST 2020



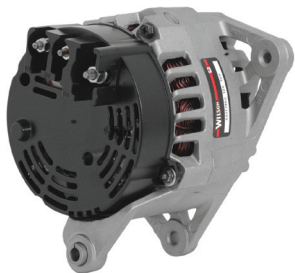
90-01-3125
90-01-3125N

Can replace Delco Remy 10SI™ type
1972-1979 : International



90-31-7021
90-31-7021N

Can replace Mando type
1994-Up : Bobcat



90-19-2514
90-19-2514N

Can replace Magneti Marelli type
1989-2014 : JCB



91-27-3211
91-27-3211N

Can replace
Mitsubishi M1T type
1992-Up : Caterpillar,
Clark, Mitsubishi



91-29-5390
91-29-5390N

Can replace Denso OSGR type
1996-2007 : Hyster, Yale



91-29-5212
91-29-5212N

Can replace Denso OSGR type
1975-Up : Bobcat, Buhler,
Compac, Jacobsen, Kubota,
MQ, New Holland, Phoenix,
Red D Arc, Schaffer, Thomas
Equipment, Toro

All WILSON® products are extensively tested to meet the reliability demands of on & off highway commercial vehicle applications. WILSON® products meet or exceed original equipment standards while offering value, broad coverage, and extensive availability; making WILSON® the trusted reliable alternative to OE.

OVER 3,300 Remanufactured and New WILSON® SKUs Available!



bbbind.com/wilson

Wilson® is a registered trademark of BBB Industries®