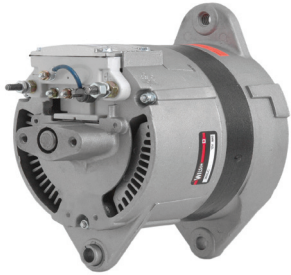


TESTED POWER. TRUSTED PERFORMANCE.



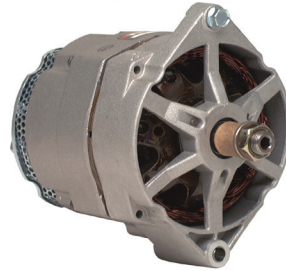
# COMMERCIAL VEHICLE *Forestry*

AUGUST 2020



**90-04-7020**  
**90-04-7020N**

Can replace  
Leece Neville (Prestolite) type  
1970-Up : Champion,  
Grove Mfg., Timberjack



**90-01-3131A**  
**90-01-3131AN**

Can replace  
Delco Remy 10SI™ type  
1964-Up : Allis Chalmers,  
Case, International,  
John Deere, Massey Ferguson



**90-01-3030**  
**90-01-3030N**

Can replace Delco Remy 25SI™ type  
1964-Up: Allis Chalmers, Caterpillar,  
Clark, Dresser, Fiat-Allis,  
Komatsu, Terex



**91-01-4161**  
**91-01-4161N**

Can replace Delco Remy  
42MT™ type  
1979-Up : Ag-Chem, Agco  
Gleaner, Allis Chalmers, Chal-  
lenger, John Deere, Lister-Petter,  
New Holland, Perkins



**91-01-4312**  
**91-01-4312N**

Can replace Delco Remy 28MT™ type  
1964-Up: Allis Chalmers, Brush  
Bandit, Hyster, Loadlifter, Macdon  
Industries, Morbark, Perkins, Toro,  
Vermeer, Westward



**91-15-7066**  
**91-15-7066N**

Can replace Bosch EV type  
1994-Up: Atlas Copco,  
Bomag, Champion, Gehl,  
JLG, KHD, Lincoln Welder,  
Schwing, Stamford,  
Thomas Equipment, Vermeer

All WILSON® products are extensively tested to meet the reliability demands of on & off highway commercial vehicle applications. WILSON® products meet or exceed original equipment standards while offering value, broad coverage, and extensive availability; making WILSON® the trusted reliable alternative to OE.

**OVER 3,300** Remanufactured and New WILSON® SKUS Available!



[bbbinc.com/wilson](http://bbbinc.com/wilson)

Wilson® is a registered trademark of BBB Industries®